

Name: \_\_\_\_\_

Date: \_\_\_\_\_

## Circling Singular and Plural Nouns Worksheet (Part 2)

A singular noun names one person, place, thing, or idea.

A plural noun names more than one person, place, thing or idea.

**Directions:** Circle the plural form of each noun that correctly fits the sentence below.

*Example A: My mom brought (chairs / chaires) to the party.*

*Answer: chairs*

1. There are four (ocean / oceans) on earth.
2. The (restaurants / restaurantes) on the street were all newly built.
3. There were a pair of (sockes / socks) lying on the sidewalk.
4. I ran out of (eraser / erasers) two months into the school year.

**Directions:** Circle the singular form of each noun that correctly fits the sentence below.

5. The (radio / radios) was difficult to turn on.
6. The (man / men) taught me how to type.
7. The (animals / animal) sat in the shade because it was hot.

## Vocabulary Skills

Write the words from the article that have the meanings below.

1. not controlled by anyone else

\_\_\_\_\_

Par. 1

2. let go

\_\_\_\_\_

Par. 2

3. animals that hunt and kill other animals

\_\_\_\_\_

Par. 3

4. got in the way

\_\_\_\_\_

Par. 3

5. all sides are equal

\_\_\_\_\_

Par. 3

Check the meaning of the underlined word in each sentence.

6. If you camp at Yellowstone, you might hear a wolf bay at night.

\_\_\_\_\_ part of a sea

\_\_\_\_\_ howl

7. Wolves usually travel in a pack.

\_\_\_\_\_ to fill with things

\_\_\_\_\_ a group

Write a compound word using two words in each sentence.

8. Antoine will carry a pack on his back when he hikes at the park.

\_\_\_\_\_

9. The family will bring some trail mix they made at home.

\_\_\_\_\_

## Reading Skills

Write **F** before the sentences that are facts.

Write **O** before the sentences that are opinions.

- \_\_\_\_\_ Wolves are beautiful creatures.
- \_\_\_\_\_ Yellowstone currently has the major predators it had throughout history.
- \_\_\_\_\_ Wolves are an annoyance.
- \_\_\_\_\_ Wolves mostly hunt elk and deer.
- \_\_\_\_\_ More than 250 wolves live in Yellowstone today.
- What caused the “see-saw” to become unbalanced at Yellowstone?

\_\_\_\_\_

\_\_\_\_\_

- If another species disappears at Yellowstone in the future, what do you think scientists might do?

\_\_\_\_\_

\_\_\_\_\_

- What is a keystone species?

\_\_\_\_\_

\_\_\_\_\_

- Did the environment at Yellowstone begin to change right before or right after the wolves were brought back?

\_\_\_\_\_

\_\_\_\_\_

- What problem did some people have with wolves in Yellowstone?

\_\_\_\_\_

\_\_\_\_\_

\_\_\_\_\_

\_\_\_\_\_

# The Wolves Are Back!

*Why do you think the wolves disappeared from Yellowstone National Park?*

1 If you were to take a trip to Yellowstone National Park, there is a good chance that you would be able to catch a glimpse of a wolf during your visit. More than 250 wolves live in Yellowstone National Park today. But if you had visited just a few years ago, you would not have had a chance to see one of these beautiful, independent creatures.

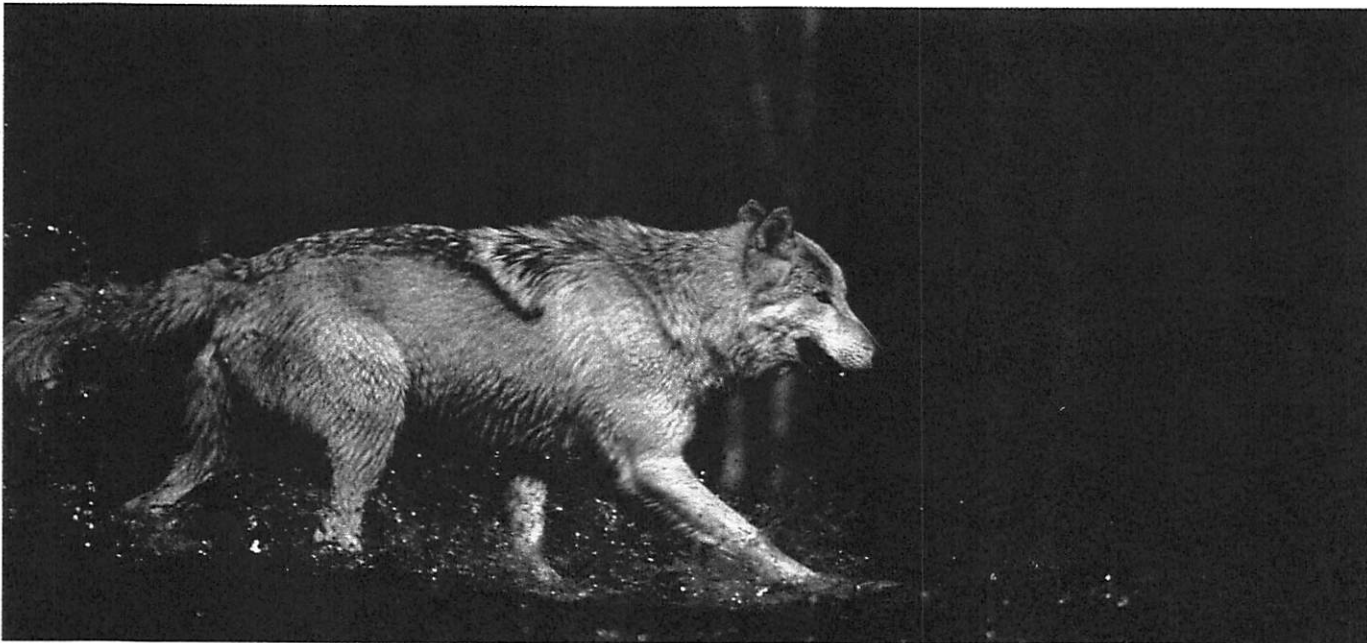
2 Between 1926 and 1995, there were no wolves living in Yellowstone. Because wolves did live there in the past, scientists decided to try to bring them back to the park. In 1995, the United States Fish and Wildlife Service captured 14 wolves in Canada and released them in the park. A year later, they caught and released 17 more wolves. By the third year of the program, 64 wolf pups had been born. The wolves were breeding and raising their young even more quickly than the scientists had hoped!

3 Today, scientists say that Yellowstone National Park has the major predators that it once had before humans interfered. You might wonder why animals that hunt and kill other animals are so important, but everything in nature has a role to play. Think of nature as a

see-saw that always wants to be balanced. A big change in nature will cause the “see-saw” to become unbalanced. Human beings, who believed wolves were a dangerous annoyance, caused things to go out of balance at Yellowstone.

4 Scientists call wolves one of the keystone species. This means that many other plants and animals depend on them. Some scientists believe that wolves affect as many as 25 other species at Yellowstone. For example, wolves mostly hunt elk and deer. Other animals that live in the area eat the leftover meat wolves leave behind. This means that those animals may eat fewer plants. More plants grow, and they may be larger than before. This provides shelter for some animals and insects.

5 At Yellowstone, the environment began to change not long after the wolves were brought back. It is quickly becoming more like it was hundreds of years ago. Many people have heard about the program and are interested to hear how the wolves are doing. Scientists are glad that more people are learning about endangered species and how important even a single type of animal can be to the environment.





# Robertson Elementary & Middle School

## Weather / Snow Day Packet 2

### 4<sup>th</sup> Grade EA

Student Name:

---

\*Packet must be completed and turned in to  
 Mr. Acord within two (2) days after school  
 resumes from the MID (non-Traditional  
 Learning Day).



# **Road Branch Elementary & Middle School**

## **Weather / Snow Day Packet 5**

### **4<sup>th</sup> Grade ELA**

**Student Name:** \_\_\_\_\_

**\*\*Packet must be completed and turned in to  
Mr. Acord within two (2) days after school  
resumes from the NTID (Non-Traditional  
Instructional Day).\*\***