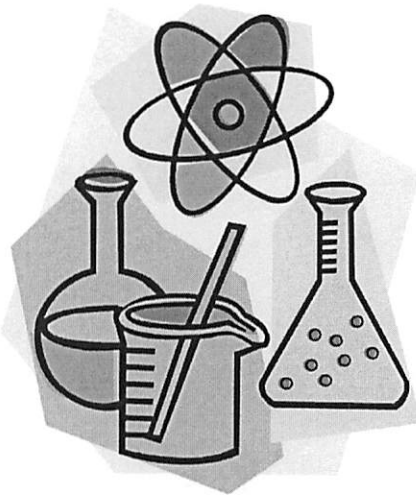


**ROAD BRANCH ELEMENTARY & MIDDLE SCHOOL**

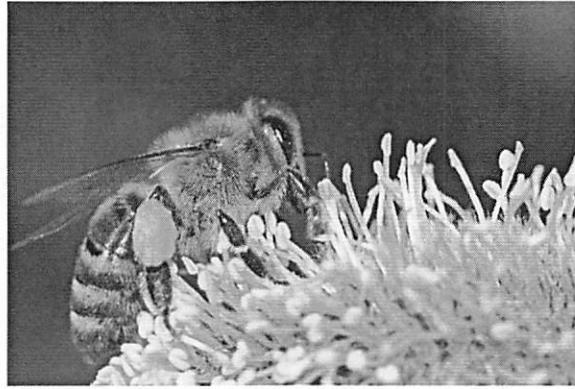
**NTID/SNOW DAY PACKETS**



**SCIENCE 7**

**Day 1**

## Why Bees Are Important

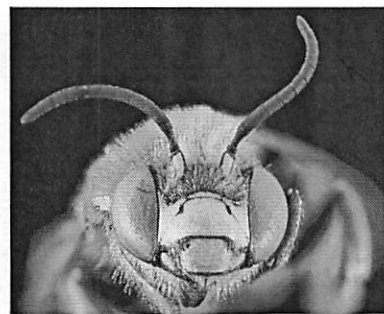
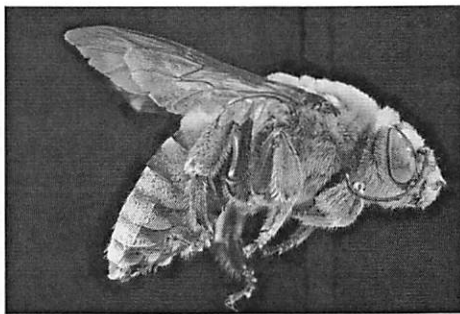


The thought of a world without bees may make some people happy. But bees are very important to both plants and animals (including us).

### The body of a bee

Bees' physical characteristics are unique and play a major role in helping them accomplish tasks that are important for the planet. So before we go any further, let's first take a look at some of their most important features.

A bee has a hairy body that has three parts: the head, the thorax (like their chest), and the abdomen (stomach area). Bees also have compound eyes: eyes that are made up of thousands of little eyes.

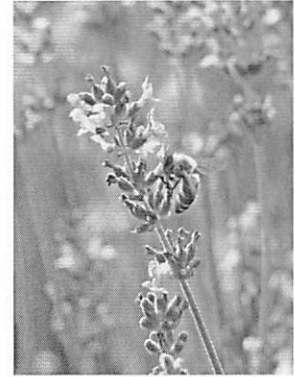


Bees have a hairy body with a head, thorax, and abdomen, and compound eyes.

Their eyes help them to see things very clearly. At the bottom of the bee's head is a straw-like tongue used to suck nectar from flowers. Bees also have three pairs of legs, a stinger, and two stomachs. One of the stomachs is for food and the other is for storing honey.

## Bees help to make our planet beautiful

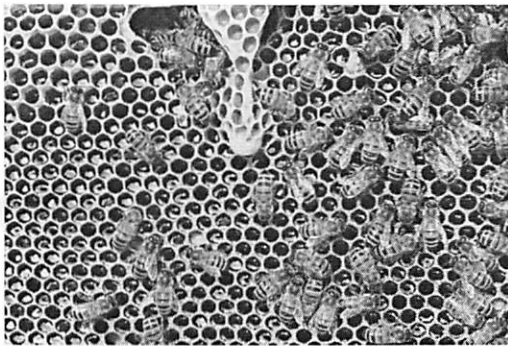
Bees help flowering plants to reproduce and spread by carrying pollen from one plant to another. Pollen exchange is how flowering plants reproduce. Bees also eat pollen and nectar, which they turn into honey. The pollen sticks to the bee's hair and can be spread from one flower to another. Fruits like apples, pumpkins, and blueberries need bees to help them reproduce.



Bees carry pollen from flower to flower, helping plants reproduce.

## How do bees make honey?

The bee's straw-like tongue helps it to get nectar from deep inside a



Bees make honey, then spread it over the honeycomb and seal it in.

it in for storage.

flower. The nectar goes straight to the bee's honey stomach. A bee can carry its own weight in honey. To fill its stomach, a bee visits up to 1,500 flowers, then returns to the hive, where it gives its nectar load to worker bees. Worker bees chew up the honey, then pass it to another bee to chew up for a while. The nectar gets passed from bee to bee until it becomes honey. The bees then spread it over the honeycomb, dry it out with their wings, and seal

## Dangers to bees and how we can save them

Bee populations have declined almost every year since 2006 due to several factors, including:

- Diseases
- Not having the right kind of food
- Pesticides
- Humans destroying the natural homes of bees



Some people plant wildflowers for bees.

To save bees, some people plant certain wildflowers and grasses that are known to be preferred by bees. They also have stopped using some pesticides known to kill bees in large numbers.

Bees are very important to the world. Without them, the world would not be as colorful nor provide as much food as it does today.

### **Reading Comprehension Questions**

1. What are the main parts of a bee's body?
2. How do the special eyes of bees help them?
3. How are bees able to get nectar from deep inside flowers?
4. Explain what each stomach of the bee is for.
5. How are bees helpful to plants?
6. How do bees make honey?

### **Extension Questions**

7. What is a symbiotic relationship? Why do plants and bees form one? Can you name another example besides the one between bees and flowers?
8. Why do you think bees are important for our world?
9. Do some research and summarize what scientists think would happen if bees suddenly disappeared.
10. Create a "Save The Bees" poster that outlines what you have learned from this article as well as your own research. Your job is to convince people why bees are so important.